

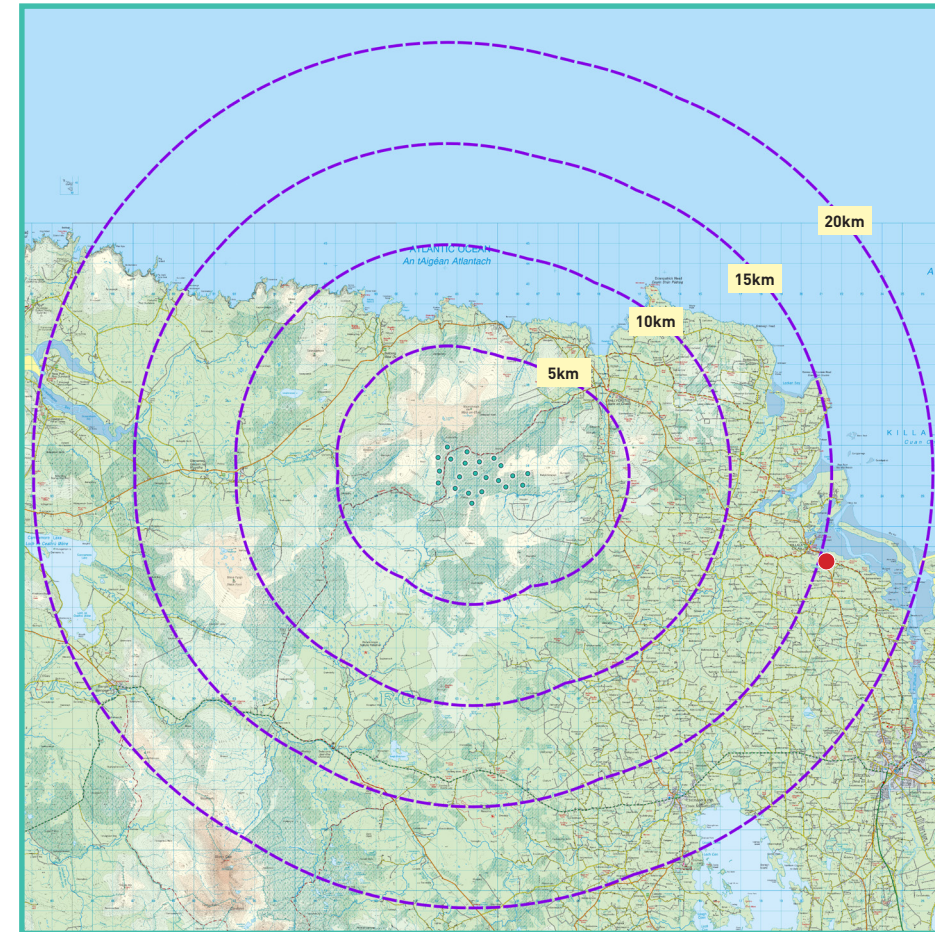
# View Point 7

# Killala (east)

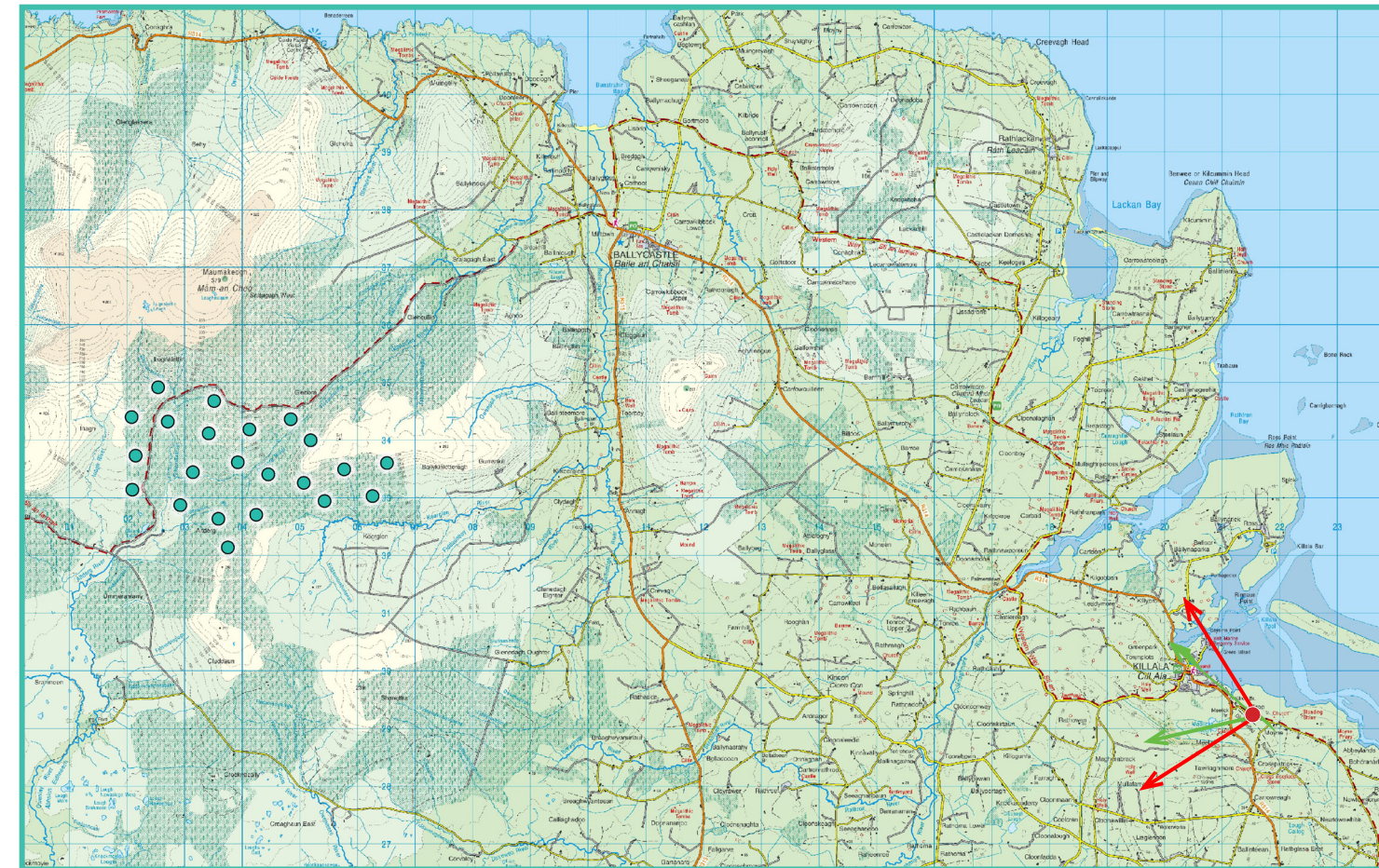
## Photomontage 7

View from a local road near Killala in the townland of Kilroe, approximately 15.7 km east of the nearest proposed turbine.

View point grid reference	521534(E); 829215(N)
Date of image taken	29.09.2021
Time of image taken	09:20
View point elevation	12m
Angle of Views	90° / 53.5°
View Direction (Image Centre)	283°
Horizontal extent of proposed turbines	8°
Distance to nearest proposed turbine	15.7km (116)
Number of proposed turbines visible	21/22
Turbine Hub Height	99m
Turbine Tip Height	180m
Turbine Rotor Diameter	162m
Montage Type	Type 4* Photomontage / Photowire / Survey / Scale Verifiable
Camera & Lens	Canon 5D Mark III / Full Frame Sensor with a 50mm Lens
Tripod	Manfrotto 190X extended to approx 1.5m.
Guidance	* Visual Representation of Development Proposals, Landscape Institute Technical Guidance Note 06/19, 2019
Map Licence	© Ordnance Survey Ireland. All rights reserved. Licence number CYAL50267517



View point relative to 20km radius.



View point relative to wind farm site.



Detail of view point location.

### Map Legend

- Area shown in 90° view
- Area shown in 53.5° view
- View Point

### Wireline Legend

- Proposed Wind Farm
- Proposed Met Mast
- Existing Wind Farms
- Permitted Wind Farms
- Other Proposed Wind Farms

### Prepared by

MKO  
Planning & Environmental Consultants  
Tuam Road, Galway.

Tel: (091) 73 56 11  
E-mail: info@mkofireland.ie  
Website: www.mkofireland.ie



90° View Extent

Key Image at 120°

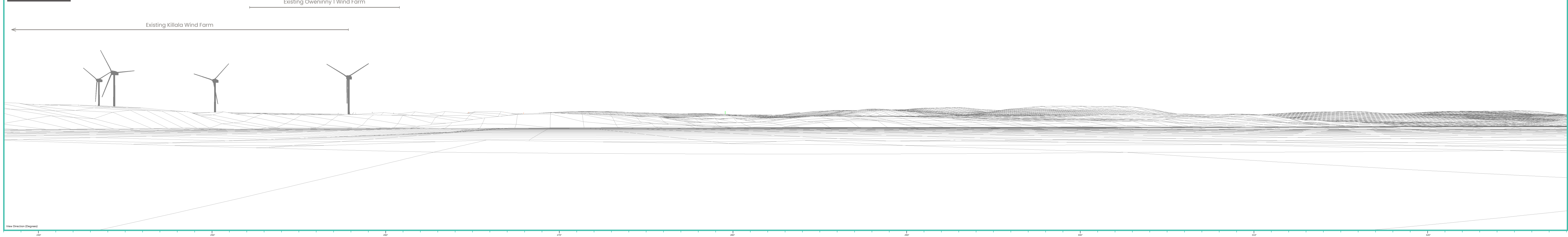


53.5° View Extent

Existing View at 90°



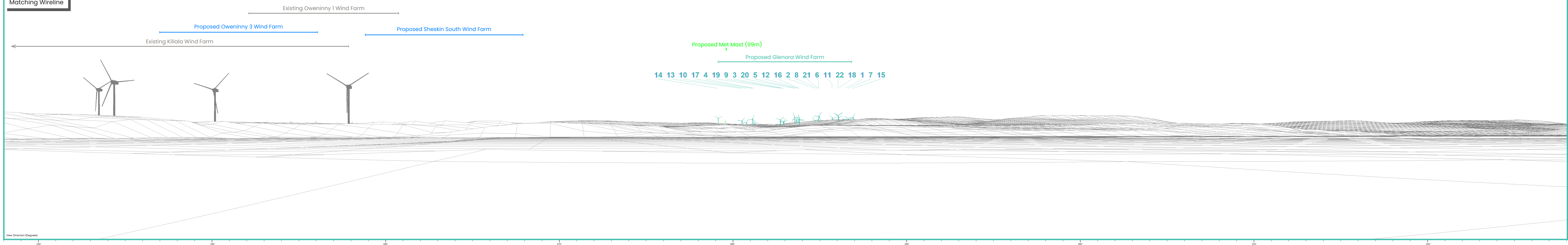
Matching Wireline



Proposed Photomontage with Cumulative at 90°



Matching Wireline



Proposed Photomontage with Cumulative at 53.5°



View Direction (Degrees)

260°

270°

280°

290°

300°

26.5°

53.5°

9.1'

18.2'

Matching Wireline

Existing Oweninny 1 Wind Farm

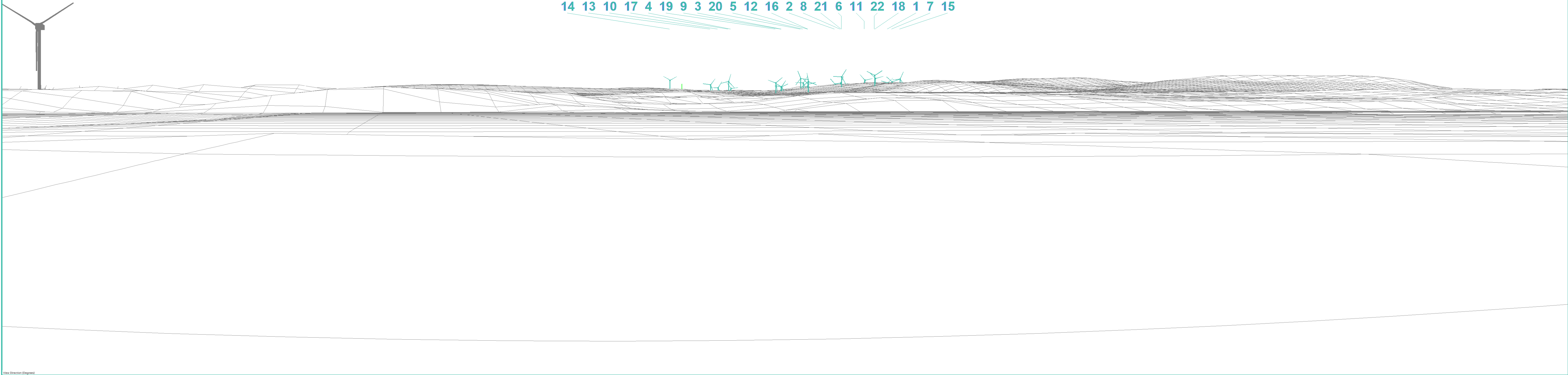
Proposed Sheskin South Wind Farm

Existing Killala Wind Farm

Proposed Met Mast (99m)

Proposed Glenora Wind Farm

14 13 10 17 4 19 9 3 20 5 12 16 2 8 21 6 11 22 18 1 7 15



View Direction (Degrees)

260°

270°

280°

290°

300°

0' Included Vertical Angle (18.2°)

9.1'

18.2'